

UL, CSA and NEMA Enclosures

UL 508A, Type 1 & 3R and CSA 22.2/FTTA7

Environmentally Rated Accessories

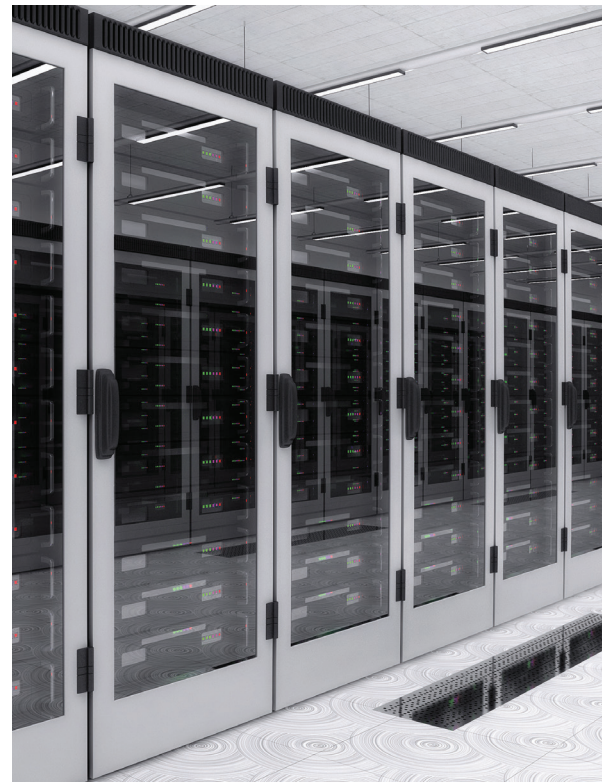
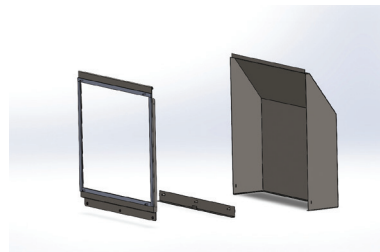
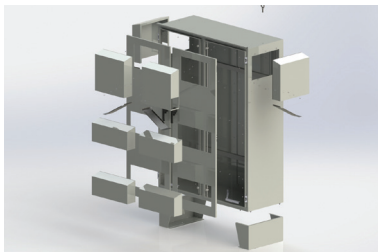
All Designed and Built In-House

Your American Fabrication Partner® provides UL, CSA and NEMA certified enclosures; prototypes, complete assemblies, and high-volume production—start to finish.



We serve virtually any industry or application, including data centers supporting Artificial Intelligence. Our certified enclosures meet the rigorous requirements of U.S. and Canadian electrical codes through comprehensive in-house testing and compliance monitoring.

- Enclosure and accessory kits are available in steel, aluminum or stainless.
- Sizes range from handheld to 77" x 72" x 30".
- Types include wall mount to free standing, indoor or outdoor.
- All enclosures and hood shrouds are manufactured in-house in the U.S.A.



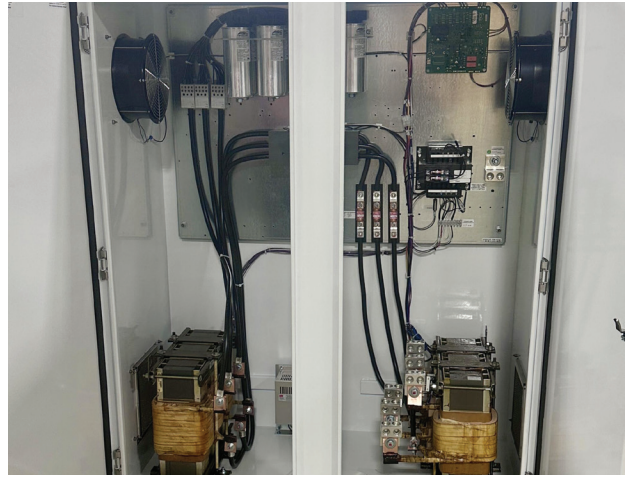
"We recently received a large customer order that we needed filled quickly to meet our customer demand for a data center project. The team at Creative Metal Products put a plan in place in 4 weeks to increase their capacity from 12 units a week to 12 units a day to meet our delivery schedule. Ultimately our orders were delivered on time and we were successful on the project!"

- Supplier Development Professional From a Fortune 500 Company

Our UL and CSA Enclosures are Built with Flexibility in Mind

Our complete enclosure assemblies include hardware insertion, gasketing, riveting, electrical mounting and installation. Options include:

- Double door or single door
- Any color requested
- Lift off or piano style hinges
- Stainless or zinc hardware
- Patented Sierra Pacific Lockable Defeater Handle or other options available
- Multiple gasket options
- Order with or without:
 - Removable center posts
 - Drip shields
 - Fans
 - Filter fan assemblies
 - Exhaust grilles
 - Heavy duty lifting rings

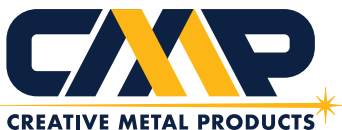


In-Field Service

Creative Metal Products will provide in-field service and support for our enclosures, including support for damaged enclosures or cosmetic repairs.

If you have questions or need unique options, please don't hesitate to contact us.

visit www.creativemp.com
or contact us at 920-886-7370



Your American Fabrication Partner 

920-886-7370 • INFO@CREATIVEMP.COM • CREATIVEMP.COM